

Allen County *Insight*

A summary of economic events, data, and trends published by the Community Research Institute

On the web: www.ipfw.edu/cri

In this Issue

Focus on...
Agriculture

Also...

- Employment
- Wage and Income
- Labor Force Review
- Jobs & Job Change by Industry

From the Director

Agriculture and Economic Development Initiatives

CRI Staff

- Ellen Cutter
- Valerie Richardson
- Ashley Wierzbinski



Allen County Insight is brought to you by The Community Research Institute at IPFW with the support of the Allen County Commissioners



Introduction

In this issue, the quarterly focus is on Agriculture. The Director’s Corner discusses some of the employment dynamics within the food manufacturing and crop and animal production industries as well as local Agri-Business economic development initiatives.

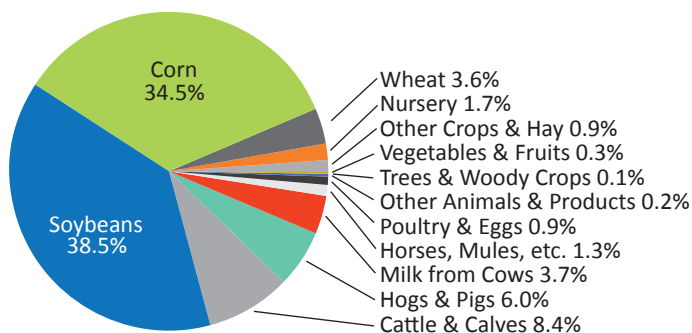
This newsletter is also available on our website: <http://www.ipfw.edu/centers/cri/reports>.

Allen County Agriculture

With the release of the Census of Agriculture this year, a report which is prepared every five years by USDA, we have an update on the agricultural sector in our county. Since Allen County is the third most populated county in the state with over 363,000 residents, it may come as a surprise that agriculture contributes as heavily to the economy as it does. In a state ranked 10th for agricultural production, Allen County ranks 19th out of the 92 Indiana counties in value of agricultural production. It contributes to our Gross Regional Product at a level higher than the Mining and Arts and Entertainment sectors with over \$96 million in 2012.

What is produced in Allen County? Crops are king here; they account for 80 percent of the total value of commodities. Of those, soybeans had the highest commodity value (38.5% of total), followed by corn (35.0%). Livestock and their products accounted for 20.4 percent, with cattle and calves accounting for almost half of this, followed by hogs and pigs. Detail is shown in the chart to the right. (note: 2012 was a year of drought which affected crop sales that year).

Value by Commodity: Allen County 2012



Source: 2012 USDA Census of Agriculture
Note: Corn here is largely corn for grain.

Top Rankings

For an “urban” county, Allen County has achieved some high rankings when compared nationally:

Allen County Commodities Ranked in Top 20 Percent of all Counties Nationally:

Item	Value (\$1,000)	State Rank (92 counties)	US Rank (denominator indicates # of counties which produce item)
Horses, Mules, Ponies	\$2,406	2	65/3,011
Grains (soybeans, corn, etc.)	\$144,012	8	284/2,926
Hogs & Pigs	\$11,246	41	396/2,827
Cut Christmas Trees	\$124	4	239/1,530

Source: 2012 USDA Census of Agriculture

Allen County Acreage in Production Ranked in Top 20 Percent of all Counties Nationally:

Item	Acres	State Rank (92 counties)	US Rank (denominator indicates # of counties which produce item)
Soybeans	110,614	3	171/2,162
Corn (for grain)	93,109	25	326/2,638
Winter Wheat (for grain)	13,303	4	496/2,480

Source: 2012 USDA Census of Agriculture

Allen County Inventory Ranked in Top 20 Percent of all Counties Nationally:

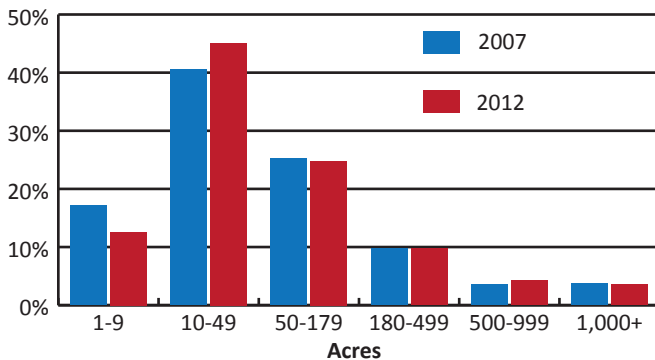
Item	Number	State Rank (92 counties)	US Rank (denominator indicates # of counties which produce item)
Horses & Ponies	5,260	4	58/3,072
Hogs & Pigs	34,093	34	372/2,889
Layers*	46,508	23	494/3,040

Source: 2012 USDA Census of Agriculture

*Broilers would probably also make this chart but the value was “non-disclosed” for Allen County, although USDA report indicated Allen broilers ranked 10th in the state.

Has farming changed? Nationally, there has been a steady growth of small farms (less than 50 acres) as well as a growth in the large farms (greater than 2000 acres). In Allen County in 2012, 58 percent of all farms are small, compared to 47 percent statewide. In Allen County, this is relatively unchanged since 2007, although the percentage of very small farms (less than 9 acres) has decreased. Almost 4.0 (3.7) percent of all farms in Allen in 2007 were 1,000 acres or more, compared to 3.6 percent in 2012. The total number of larger farms increased by one, from 61 to 62.

Farms by Size, Allen County



Source: 2012 and 2007 USDA Census of Agriculture

	2007	2012	Percent Change
Number of Farms	1,649	1,725	4.6%
Land in Farms	254,136	270,808	6.6%
Market Value of Products Sold	\$117,515,000	\$187,639,000	59.7%
Government Payments	\$5,533,000	\$6,302,000	13.9%

Source: 2012 and 2007 USDA Census of Agriculture

Of the 1,725 farms in Allen County, 57 percent were run by those who claimed some occupation other than farming as their principal occupation. Farm operators were generally male-87 percent of all Allen County farms were run by men. The average net cash farm income, after expenses, was \$35,246.

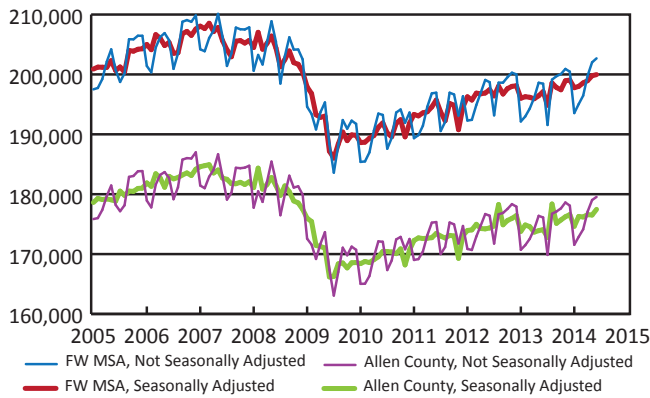
Even with the increased interest in farm markets, Community Supported Agriculture (CSA) memberships, and other direct purchase opportunities, only \$632,000 was reported as being sold directly to individuals by Allen County farmers. Although this is a 22 percent increase from the 2007 report, there is some room for relative growth: in the third most populous county in Indiana, this is a 9th place ranking in terms of total sales. In terms of direct sales on a per county resident comparison, this is equivalent to \$1.72 per resident which places us 78th among the 89 counties reporting this statistic. The state average is \$4.09 per resident. To be fair, though, the larger counties in Indiana had some of the lowest direct sales rates.

Products from organic farms have also generated interest nationally. Allen County has a lower percentage of farms (0.6 percent) that are either certified organic, organic exempt from certified, or transitioning into certified than the state (0.8 percent). The value of products sales are also slightly less, 0.2 percent of Allen’s sales compared to 0.3 percent of the state.

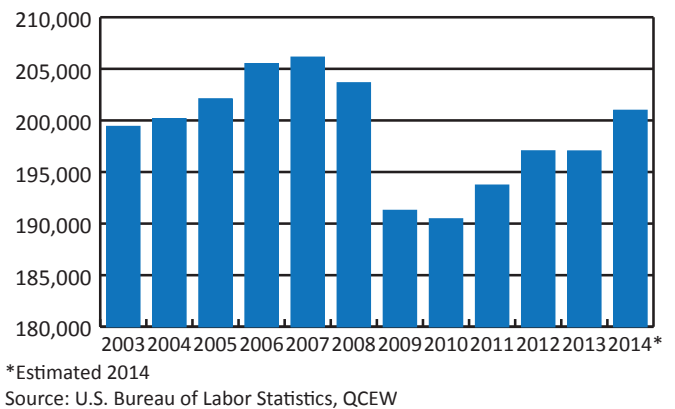
Allen County at a Glance

Employment and Labor Force

Allen County and Fort Wayne MSA Employment



Fort Wayne MSA Annual Employment



Labor Force (Not Seasonally Adjusted)

	December 2013	December 2014	Change #	%
Allen County	175,355	181,248	5,893	3.4%
Fort Wayne MSA	206,038	213,034	6,996	3.4%
Indiana	3,160,697	3,250,754	90,057	2.8%
U.S.	154,408,000	155,521,000	1,113,000	0.7%

Source: U.S. Bureau of Labor Statistics, LAUS

Current Employment

	June 2013	June 2014	% Change
Allen County	176,113	179,548	2.0%
Fort Wayne MSA	191,559	202,683	2.1%
Indiana	2,865,075	2,916,855	1.8%
U.S.	135,101,731	137,776,364	2.0%

Source: U.S. Bureau of Labor Statistics, QCEW

Fort Wayne MSA tied for 29th for best percentage change and ranked 42nd in actual change in number in labor force from November 2013 to November 2014 out of 372 MSAs according to Garner Economics January 2015 Metro Labor Force and Unemployment Profile.

Wages and Income

	Avg. Annual Wage 2013 (BLS, QCEW)	Change from 2012-2013	Per Capita Personal Income 2013 (BEA)	Change from 2012-2013	Real PCPI 2012 (BEA)	Change from 2011-2012	Median Household Income 2013 (Census 3 yr. ACS)	Change from 2012-2013
Allen County	\$40,082	0.7%	\$37,650	-0.1%	NA	NA	\$47,989	-8.1%
Fort Wayne MSA	\$39,638	0.8%	\$37,226	0.1%	\$38,782	2.9%	\$48,377	-6.7%
Indiana	\$41,240	1.0%	\$38,622	1.3%	\$39,553	3.3%	\$47,839	1.2%
U.S.	\$49,298	1.0%	\$44,765	1.3%	NA	NA	\$52,176	1.7%

Unemployment Rate

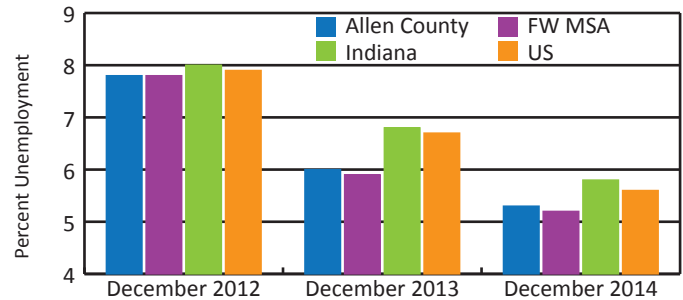
Unemployment Rates

	December 2014	December 2013	Change
Allen County	5.3	6.0	-0.7
FW MSA	5.2	5.9	-0.7
Indiana	5.8	6.3	-0.5
U.S.	5.4	6.5	-0.9

Source: U.S. Bureau of Labor Statistics, LAUS

Note: Data is not seasonally adjusted.

Unemployment Rates, Seasonally Adjusted



Employment by Industry

Allen County Employment by Industry	2013	2014 (p)	Change from 2013-2014 (p)		2009	Change from 2009-2014 (p)	2014 Wages (p)
Construction	7,846	7,862	16	0.2%	7,967	-105	\$48,311
Manufacturing	27,053	29,076	2,023	7.5%	24,475	4,601	\$55,994
Wholesale Trade	8,881	8,773	-108	-1.2%	10,020	-1,248	\$49,897
Retail Trade	19,950	19,464	-485	-2.4%	19,216	248	\$24,487
Transportation and Warehousing	6,325	6,504	178	2.8%	6,744	-241	\$44,381
Information	2,991	2,944	-47	-1.6%	3,091	-148	\$54,847
Finance and Insurance	8,258	8,489	231	2.8%	8,126	363	\$62,953
Real Estate and Rental and Leasing	1,945	1,776	-169	-8.7%	1,744	31	\$33,535
Professional, Scientific, and Technical Services	5,515	6,229	715	13.0%	6,258	-28	\$52,550
Management of Companies and Enterprises	1,736	1,873	137	7.9%	1,346	526	\$61,699
Administration and Support and Waste Management and Remediation Services	10,274	11,808	1,534	14.9%	9,695	2,114	\$24,346
Educational Services (Private)	3,211	3,519	308	9.6%	2,935	584	\$29,989
Education (Public)	9,352	9,620	268	2.9%	9,400	220	\$37,048
Health Care and Social Assistance	29,868	30,549	681	2.3%	27,686	2,863	\$43,324
Arts, Entertainment, and Recreation	2,325	2,511	186	8.0%	2,134	377	\$17,238
Accommodation and Food Services	15,481	15,558	77	0.5%	14,957	601	\$13,795
Other Services (except Public Administration)	4,994	5,280	286	5.7%	4,826	454	\$25,587
Government, excluding education	8,169	7,946	-223	-2.7%	8,517	-571	\$45,471
Other* (Agriculture, Mining, and Utilities)	814	799	-15	-1.8%	781	-16	\$66,640
Total, Allen County	174,987	180,578	5,591	3.2%	169,920	10,625	\$40,363

Source: Employment: EMSI 2014.4 BETA Class of Worker QCEW
 Note: Wages include all employees, including part-time.

* Agriculture does not include self-employed workers, see Director's Corner for more information.

(p)= preliminary

Major Postive Changes by Sub-Industry 2009-2014

Largest Increase by Number of Employees:	2009	2014 (p)	Change (p)	2014 Wages (p)
Motor Vehicle Manufacturing	1,953	4,567	2,614	\$78,810
Employment Services (Temporary)	4,475	6,437	1,962	\$23,015
General Medical and Surgical Hospitals	10,023	10,971	948	\$49,141
Motor Vehicle Parts Manufacturing	806	1,468	662	\$46,716
Home Health Care Services	1,030	1,658	628	\$24,242
Services to Buildings and Dwellings	2,550	3,079	529	\$21,081
Management of Companies and Enterprises	1,346	1,873	527	\$61,699
General Freight Trucking	3,088	3,585	497	\$47,688
Nursing Care Facilities (Skilled Nursing Facilities)	2,706	3,175	469	\$26,292
Continuing Care Retirement Communities and Assisted Living Facilities for the Elderly	906	1,302	396	\$21,629

Largest Increase by Percentage of Employee Gain:	2009	2014 (p)	Change (p)	2014 Wages (p)
Other Transportation Equipment Manufacturing	43	188	337%	\$42,180
Forging and Stamping	76	273	194%	\$49,163
Office Administrative Services	65	191	194%	\$45,255
Pulp, Paper, and Paperboard Mills	34	98	188%	\$55,249
Other Nonmetallic Mineral Product Manufacturing	59	152	158%	\$35,239
Other Residential Care Facilities	169	412	144%	\$21,992
Medical Equipment and Supplies Manufacturing	160	385	141%	\$52,176
Motor Vehicle Manufacturing	1,953	4,567	134%	\$78,810
Taxi and Limousine Service	10	22	120%	\$23,547
Other Textile Product Mills	57	121	112%	\$27,473

Source: Employment: EMSI 2014.4 BETA Class of Worker QCEW
 Note: Wages include all employees, including part-time.
 (p)= preliminary

Major Negative Changes by Sub-Industry 2009-2014

Largest Declines by Number of Employees:	2009	2014 (p)	Change (p)	2014 Wages (p)
Communications Equipment Manufacturing	2,984	2,070	-914	\$95,190
Grocery and Related Product Merchant Wholesalers	1,782	1,200	-582	\$42,655
Investigation and Security Services	1,384	874	-510	\$23,721
Household Appliances and Electrical and Electronic Goods Merchant Wholesalers	862	457	-405	\$65,427
Scientific Research and Development Services	534	179	-355	\$59,594
Residential Intellectual and Developmental Disability, Mental Health, and Substance Abuse Facilities	795	470	-325	\$23,846
Commercial and Service Industry Machinery Manufacturing	473	155	-318	\$60,569
Federal Government, Civilian	2,011	1,742	-269	\$66,761
Management, Scientific, and Technical Consulting Services	963	711	-252	\$57,784
Local Government, Excluding Education and Hospitals	5,752	5,556	-196	\$39,081

Largest Decline by Percentage of Employee Loss:	2009	2014 (p)	Change (p)	2014 Wages (p)
Waste Treatment and Disposal	37	0	-100%	\$0
Scenic and Sightseeing Transportation, Land	19	0	-100%	\$0
Textile Furnishings Mills	63	15	-76%	\$12,792
General Rental Centers	41	13	-68%	\$22,641
Commercial and Service Industry Machinery Manufacturing	473	155	-67%	\$60,569
Scientific Research and Development Services	534	179	-66%	\$59,594
Foundries	301	122	-59%	\$34,522
Social Advocacy Organizations	80	34	-58%	\$29,891
Vending Machine Operators	60	26	-57%	\$22,712
Gambling Industries	58	29	-50%	\$12,690

Source: Employment: EMSI 2014.4 BETA Class of Worker QCEW

Note: Wages include all employees, including part-time.

(p)= preliminary

Allen County Business Dynamics- 4th Quarter 2014

A quarterly review of events occurring with the business establishments in Allen County

The following reflect business dynamics events that have been registered by CRI as a fourth quarter event. Note that the project may have been announced in a prior quarter, but CRI attempts to report the project in the period in which some tangible action occurred. Note also that CRI does not collect data on industries related to retail, restaurant, accommodations, as well as a few other sectors. Our focus is on base industries, such as events occurring in manufacturing, insurance, defense, logistics, medical devices, food processing, as well as events that occur in the major employers. Our information is supplied by the news media, press releases, and information obtained by reputable sources.

Event	People/ Jobs	Investment in Millions	Company
New*	60	Unknown	American Specialty Insurance & Risk
Expansion	0	\$2.66	Central States Enterprises, Inc.
Expansion	5	\$0.60	First Gear Engineering & Technology
Expansion	150	\$55.00	Parkview Hospital
Expansion	18	\$11.25	D&W Fine Pack, Inc
Expansion	20	\$2.50	Intellectual Technology, Inc.
Expansion	45	\$30.50	Valbruna Slater Stainless Inc.
Expansion	5	\$4.60	Fort Wayne Metals Research Products Corp.
Expansion	110	\$2.80	Deister Machine Company
Downsizing	150	NA	Vera Bradley

*Moved to Allen County from Huntington County.

Note: Business dynamics data is continuously revised and updated.



Director’s Corner: Agriculture & Economic Development Initiatives

Incorporation of food into various avenues of community development has been a trending topic across cities nationwide. Strategies focusing on value-added agriculture, food incubators, agri-tourism, and food systems planning demonstrate a diverse array of efforts communities have employed to support their artisans and farmers, and connect their products with local consumers and processors. Despite this, the agriculture sector is sometimes not well understood in terms of its size and impact. Some of this has to do with the way state and federal sources measure employment.

The employment chart on page four includes an “Other” category inclusive of agriculture, mining, and utilities. However, it is important to note that this data is derived from the U.S. Bureau of Labor Statistics’ survey of employers covered by Unemployment Insurance programs of the United States. While this represents 97 percent of all wage and salary civilian employment nationwide, it leaves out most agricultural workers on small farms, members of the Armed Forces, elected officials, railroad employees, domestic workers, and on-campus student workers. Community Research Institute has access to private data estimates that help fill in the gaps left by the federal sources. In 2013, Crop and Animal production in Allen County employed an estimated 1,704 across all types of employment: full- and part-time, and primary and secondary jobs. Food Manufacturing (or food processing) is also an important sector employing nearly the same number of workers in 2013 at 1,687. Additionally, food packaging manufacturing is a valuable component of the sector’s supply chain, with several key employers in Allen County.

Leading Employers in Agri-Processing (Food and Non-food)

Company	City	Product/Services	Employment in FTE
Edy’s Grand Ice Cream	Fort Wayne	Ice Cream and Other Frozen Treats	542
D&W Fine Pack LLC	Fort Wayne	Plastic Food Packaging	358
Mullinix Packages, Inc.	Fort Wayne	Thermoformed Plastic Packaging	348
Heritage Food Service	Fort Wayne	Kitchen Equipment and Parts Retailer	265
Pyromation	Fort Wayne	Temperature Sensors for Food	172
Regal Beloit	Fort Wayne	Electric Motors	171
SuperValu	Fort Wayne	Food Warehousing and Distribution	160
International Paper	Fort Wayne	Corrugated Packaging Materials for Food	104
Saratoga Potato Chips, LLC	Fort Wayne	Potato Chips	100
CK Products	Fort Wayne	Confectionery Supplies	88
Ellison Bakery	Fort Wayne	Bakery	85
Aunt Millie’s Bakeries	Fort Wayne	Bakery	80
DeBrand Fine Chocolates	Fort Wayne	Gourmet Chocolates	80*
General Mills	Yoder	Food Warehousing and Distribution	79
Holsum Bakery	Fort Wayne	Bakery	70

* Some of DeBrand’s employees are retail workers.

In economic development, so-called “target industries” are sectors which are devoted more intensive financial and staff resources to support retention, expansion, entrepreneurship, and new business relocations. Greater Fort Wayne Inc. and the Northeast Indiana Regional Partnership both identify food processing and agri-business as a target industry. Additional partners like Purdue Extension provide valuable technical assistance directly to growers, while the Indiana State Department of Agriculture is working to revamp its Indiana Grown program to promote locally grown foods and job growth opportunities.

Allen County has long been celebrated for its diversity. Its agricultural industry is an important asset that must continue to be leveraged as part of an overall economic development agenda for the county and the state.

